

Fiber Optic Sensor Lateral Induction

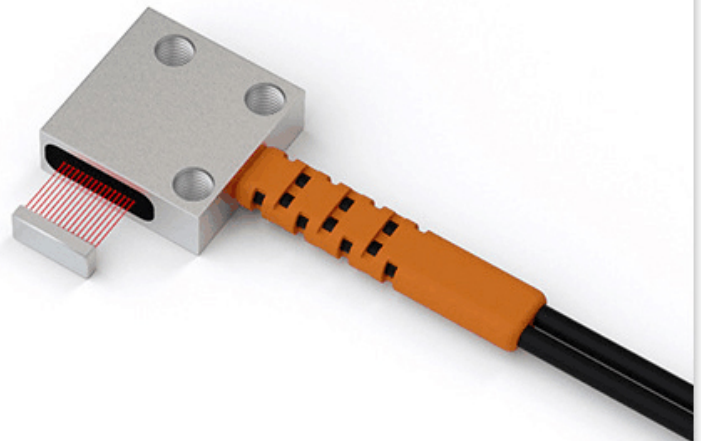
Model Specifications

DF15ML

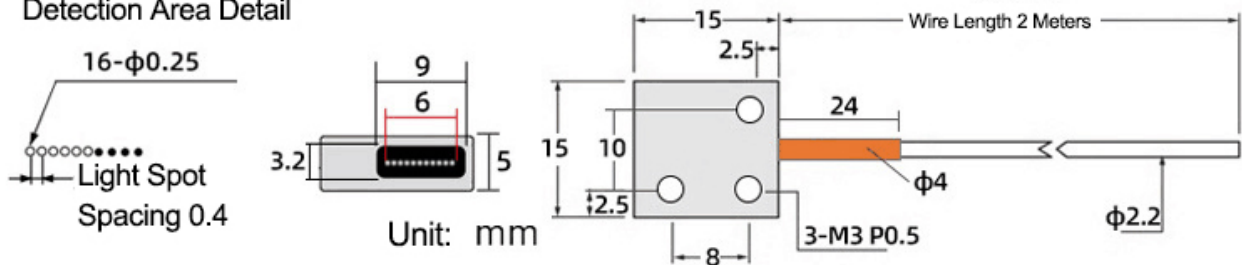
Diffuse Reflection LSD-DF15ML

Side Induction

Optical Fiber Outer Diameter:	Ø2.2
Optical Fiber Core Diameter:	Ø0.25x8
Working Temperature:	-55°C~+70°C
Check Distance:	120mm
Minimum Bending Radius:	R25



Detection Area Detail

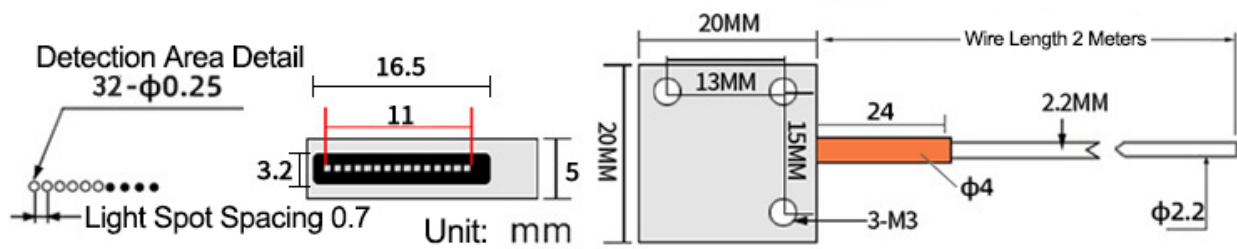
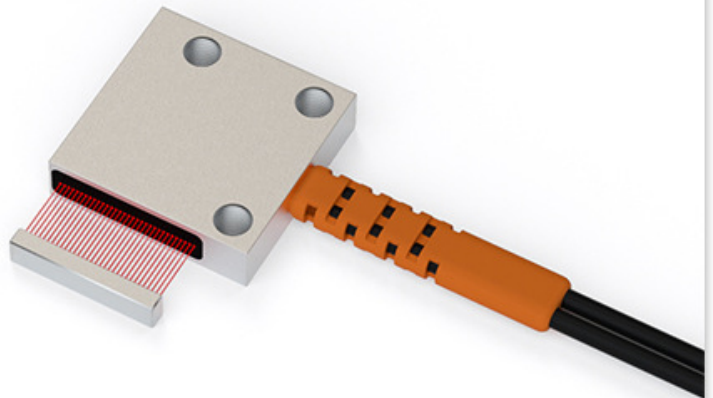


DF20ML

Diffuse Reflection LSD-DF20ML

Side Induction

Optical Fiber Outer Diameter:	Ø2.2
Optical Fiber Core Diameter:	Ø0.25x16 Ø0.25x16
Working Temperature:	-55°C~+70°C
Check Distance:	120mm
Minimum Bending Radius:	R25

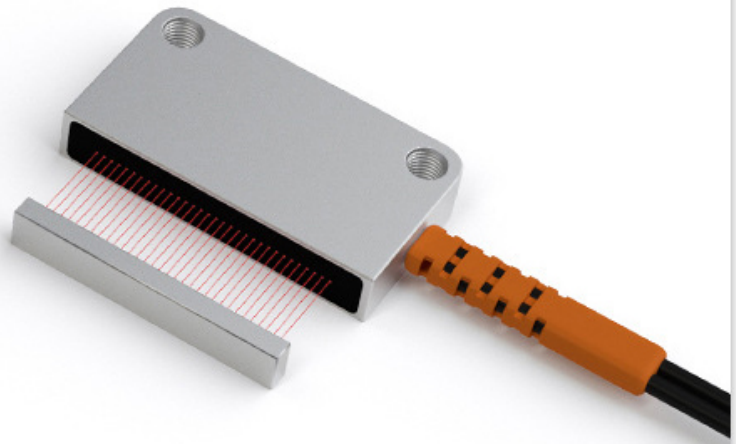


DF25ML

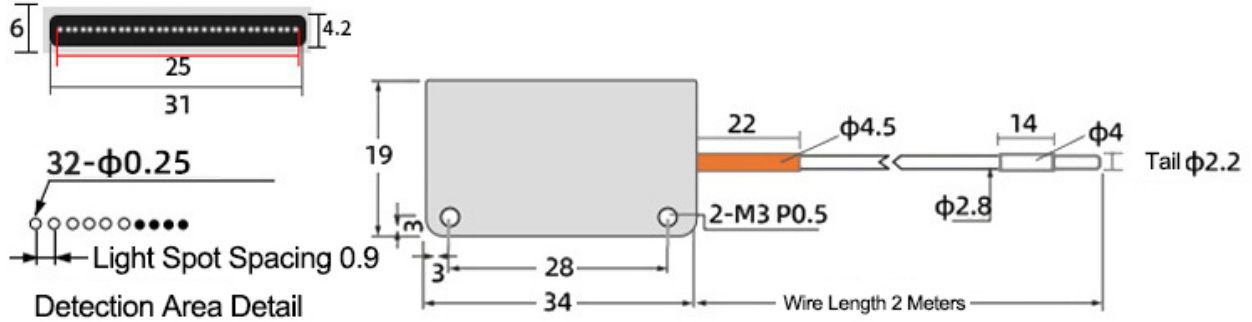
Diffuse Reflection LSD-DF25ML

Side Induction

Optical Fiber Outer Diameter:	Ø2.2
Optical Fiber Core Diameter:	Ø0.25x16
Working Temperature:	-55°C~+70°C
Check Distance:	120mm
Minimum Bending Radius:	R25



Unit: mm

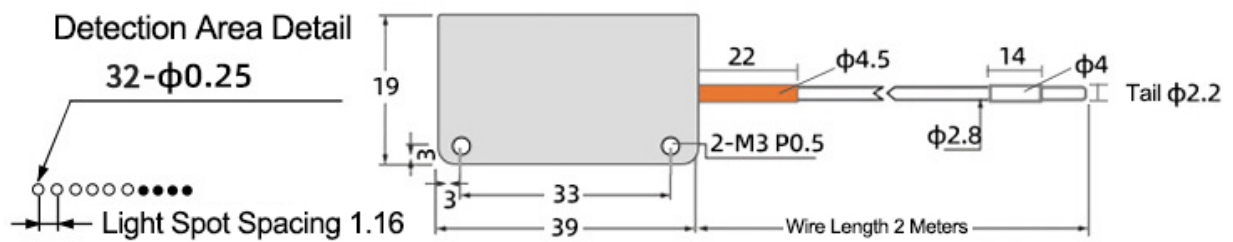
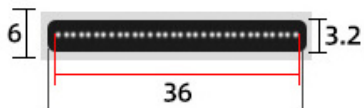
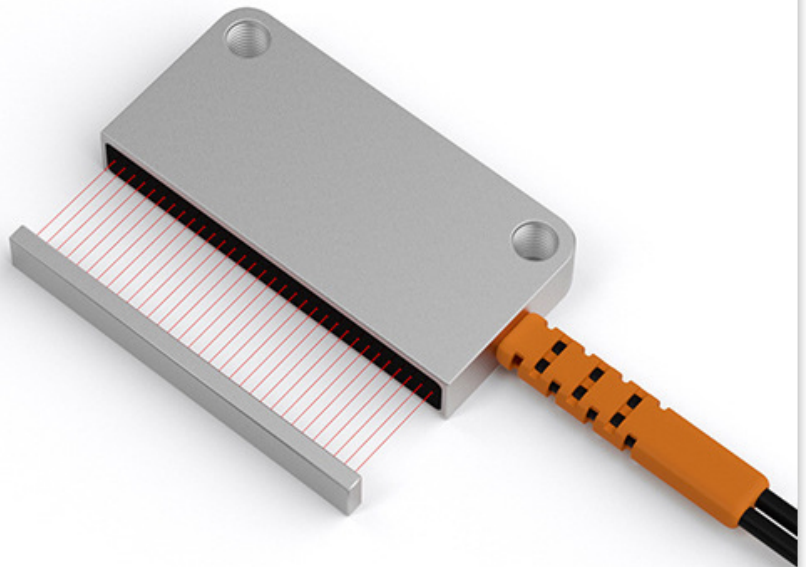


DF30ML

Diffuse Reflection LSD-DF30ML

Side Induction

Optical Fiber Outer Diameter:	Ø2.2
Optical Fiber Core Diameter:	Ø0.25x16 Ø0.25x16
Working Temperature:	-55°C~+70°C
Check Distance:	120mm
Minimum Bending Radius:	R25

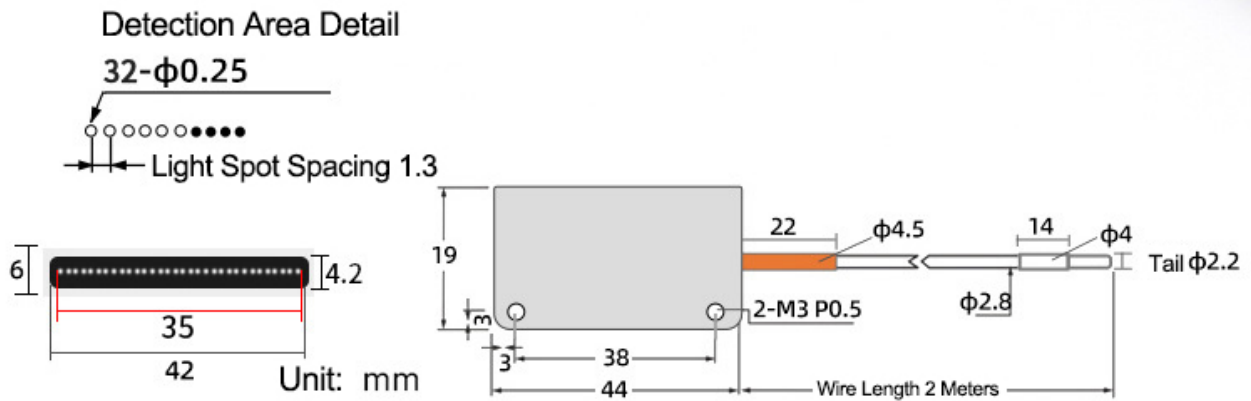
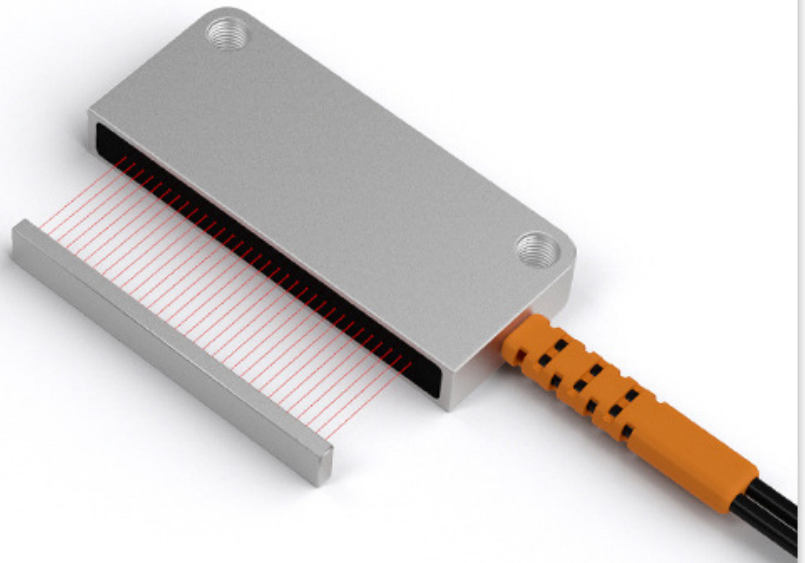


DF35ML

Diffuse Reflection LSD-DF35ML

Side Induction

Optical Fiber Outer Diameter:	Ø2.2
Optical Fiber Core Diameter:	Ø0.25x16 Ø0.25x16
Working Temperature:	-55°C~+70°C
Check Distance:	120mm
Minimum Bending Radius:	R25

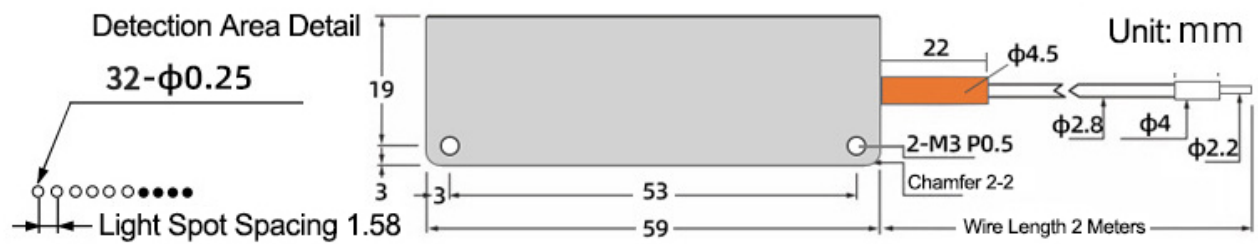
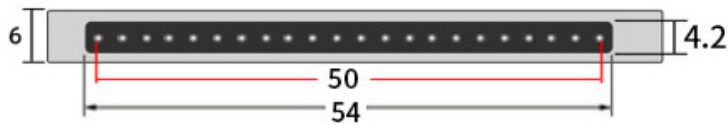
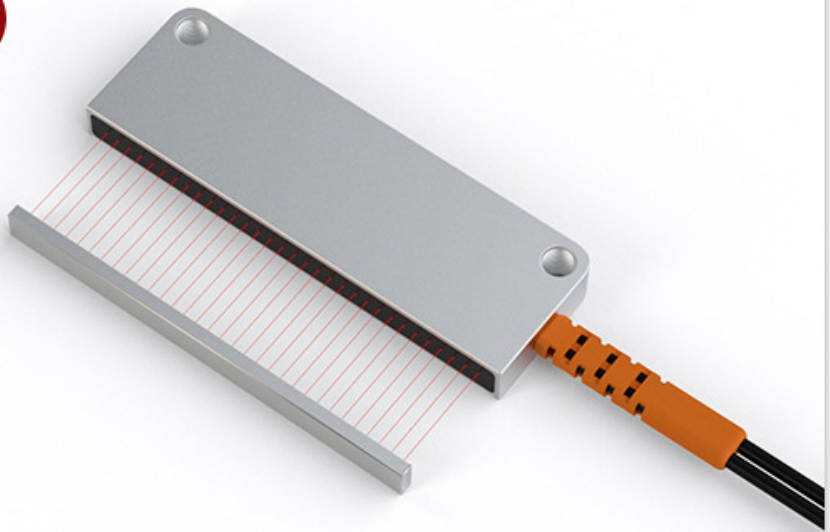


DF50ML

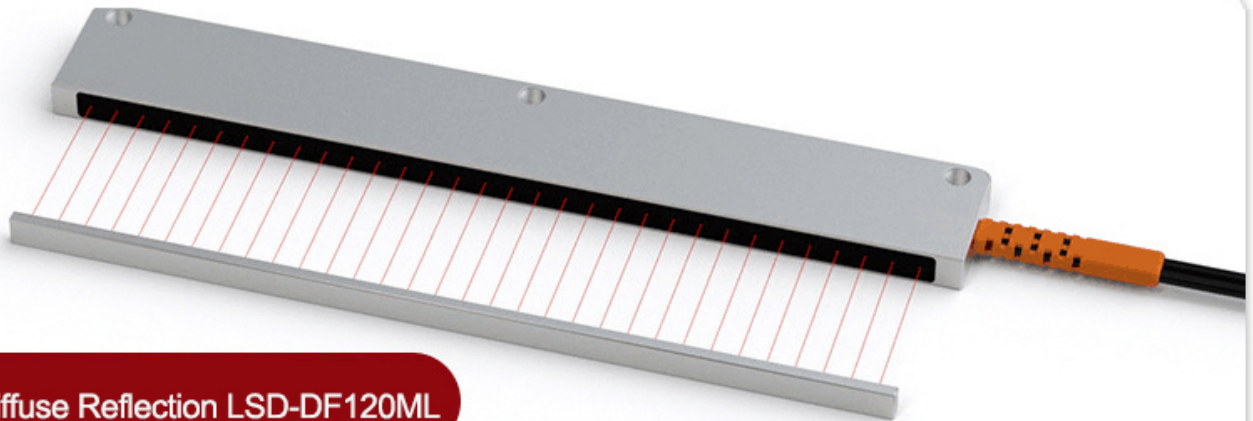
Diffuse Reflection LSD-DF50ML

Side Induction

Optical Fiber Outer Diameter:	Ø2.2
Optical Fiber Core Diameter:	Ø0.25x16 Ø0.25x16
Working Temperature:	-55°C~+70°C
Check Distance:	120mm
Minimum Bending Radius:	R25



DF120ML

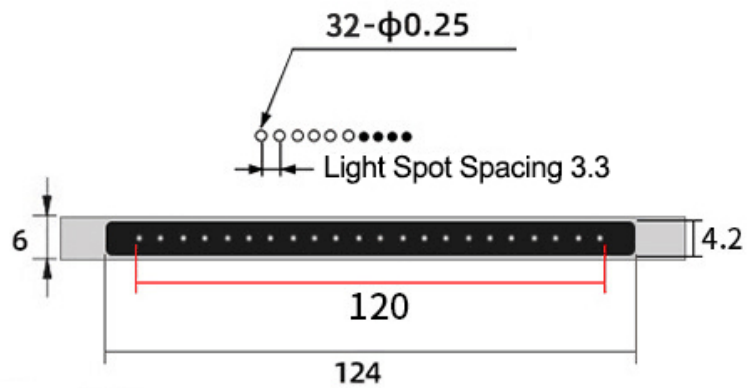


Diffuse Reflection LSD-DF120ML

Side Induction

Optical Fiber Outer Diameter:	Ø2.2
Optical Fiber Core Diameter:	Ø0.25x16 Ø0.25x16
Working Temperature:	-55°C~+70°C
Check Distance:	120mm
Minimum Bending Radius:	R25

Detection Area Detail



Unit: mm

