

# ATO FUME EXTRACTOR USER MANUAL

## 5. Structure and dimensions

◆ Thank you for purchasing ATO Fume Extractor, please read the instructions carefully before use.

### 1. Product Overview

This product is suitable for places involved in air pollution like smoke, peculiar smell, dust, poisonous and harmful gas, during the process of soldering, laser marking & carving, printing, and medical care, etc. With the triple-filter design and powerful suction, the absorbing efficiency and filtration ratio can reach 99.97%. The purified air can be discharged directly indoors.

### 2. Packing list

Please check if the following item list is missing or damaged. If there is any shortage or damage, please contact the manufacturer or dealer.

NAME OF PARTS	QUANTITY	SPECIFICATION	REMARKS
Motor	1set		
Power Line	1 piece	1.5M 10A/250V	
Smoke absorbing pipe	1 piece		Duplex are complete with two smoke absorbing pipes
External exhaust pipe	1pcs		Duplex are complete with two smoke absorbing pipes
Warranty card	1pcs		
Operation Manual	1pcs		
Primary filtering cotton	5 pieces		One of the five pieces is installed in the main unit.
Medium effect filtering core	1 set		Being installed in highly-effect
High efficiency filter element	1 set		Main-effect filtering core is included in the high-efficient
Remote Control	1pcs		Some models are equipped, please consult the dealer specifically.

### 3. Check Before Using

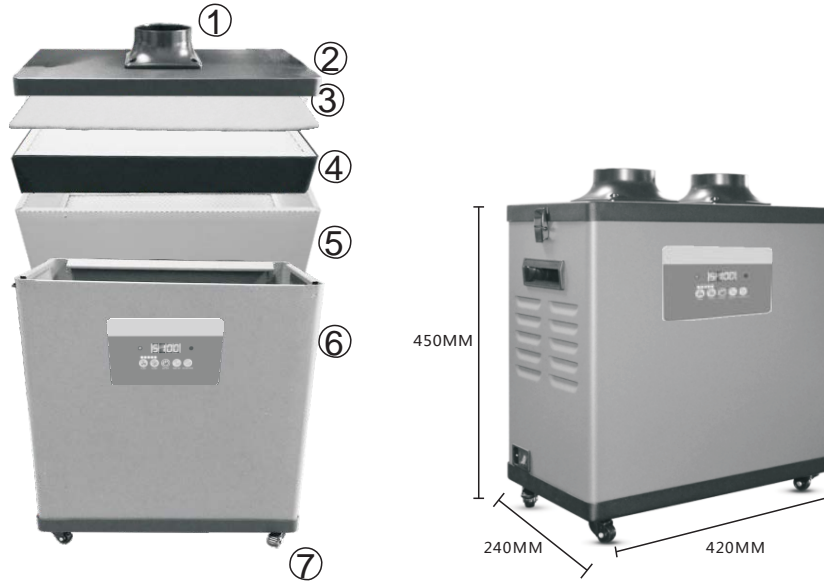
Before switching on the power for the first time, please ensure the following points, so as to guarantee the safety in operation.

1. Whether appearance is intact;
2. The power switch is set to OFF position;
3. Whether filter element is evenly placed;
4. Whether the cover and box body is installed securely;

### 4. Considerations

**Before use, please carefully check the safety precautions as below to prevent fire and personal injury.**

1. This product is prohibited to be used under high temperature environment (above 80°C), inflammable, explosive or greasy environment.
2. Supply wire must be grounded during operation.
3. Internal electric voltage of the product is as high as 310V. Disassembly of the product for inspection or maintenance must be performed by professionals.
4. Do not pick and place filter elements when products are in operation.
5. Hands or other objects should not touch the rotating impeller.



- ① Air inlet flange  $\phi$  75
- ② Top cover
- ③ Pre-filter
- ④ Middle Filter
- ⑤ Main Filter
- ⑥ Machine body
- ⑦ Universal silent wheel

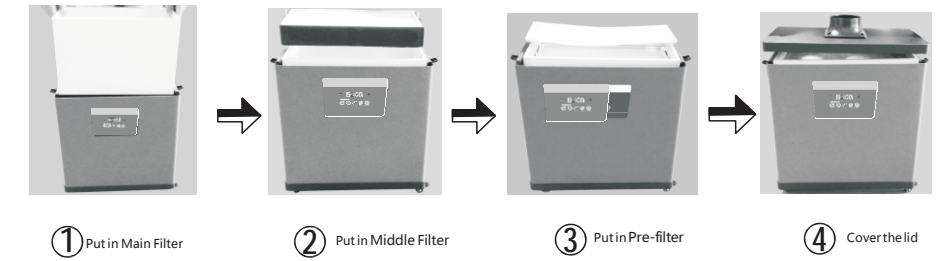
## 6. Performance index

	$\phi$ 75mm Flange	$\phi$ 75mm*2 Flange
Air inlet interface	$\phi$ 75mm Flange	$\phi$ 75mm*2 Flange
Input Voltage	AC220V /110V	AC220V /110V
Maximum Power	300W	300W
Air Velocity	27m/s	2×17m/s
Filtering Efficiency	0.3 $\mu$ m 99.97%	0.3 $\mu$ m 99.97%
Noise	< 50dB	< 50dB
Length of Duct	1.4M	1.4M
Systemic Flow	440m <sup>3</sup> /h	2×225m <sup>3</sup> /h
Dimensions of Main Unit	L425×W250×H410	L425×W250×H410
Weight (excluding the duct)	15.0kg	15.5kg

## 7. Using instructions :

### 7.1 Filtering core installing instruction

Open the top cover, correctly install high-efficient filtering core, medium-efficient filtering core, primary-efficient cotton filtering with top cover and press for buckle hasps at the two sides.



### 7.2 Duct Installation Instructions

Install the ducts on the flange of top cover as shown in the below pictures:



Rotate the ducts and adjust the nozzle near to the smoke-producing area. Then adjust the smoke-absorbing distance according to different occasions.

- ◆ Attention: While adjusting the direction of the duct, the duct body shall be kept flat or bent gently. Otherwise, it will affect the suction power. The nozzle shall be facing the working positions. The distance shall be kept within 150mm.
- ◆ The machine shall not be used at places with strong air mobility, which will cause the reduction of the suction power.

### 7.3 Operation instruction

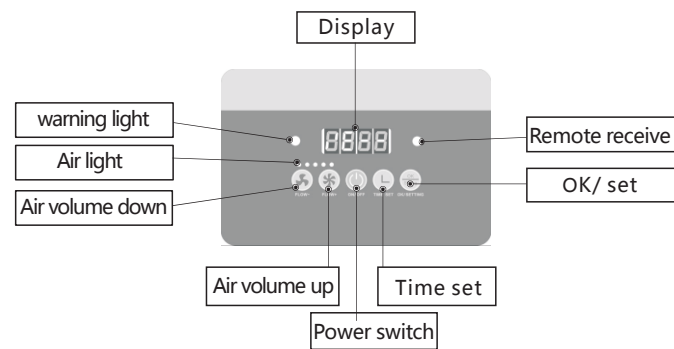
1. Plug in and check if the power plug is properly fit into the socket.
2. Turn on the power switch (figure 1), and the machine starts operation.

- ◆ Attention: Before starting the machine, please check whether the switch is close. Wind volume adjustment is based on actual needs, not too large or too small, too large to absorb air, and also increase power consumption and noise.

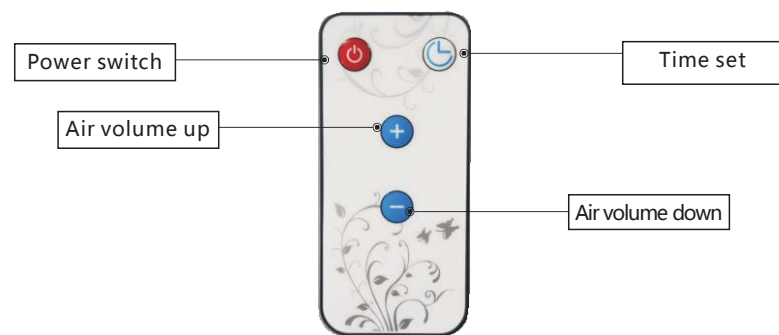


Picture1

### 3. Illustration of Control Panel:



### 4. Illustration of Remote Control:



### 5. Functions of buttons

- ◆ Power Switch button  
Press the power switch and the red light is on. The machine starts to work. Turn off the red light, the machine will stop running.  
(Attention: In case of long time shutdown, please turn off the main power switch on the machine and unplug the power plug.)
- ◆ Air volume up button  
Acceleration button: the fan speeds up 10% per touch, and it is divided into 10 gears, reaching full speed on 10 consecutive times.
- ◆ Air volume down button  
Deceleration button: 10% of the fan is decelerated each time, and at full speed, the fan will be stopped for ten times.
- ◆ Time set button  
Deceleration button: 10% of the fan is decelerated each time, and at full speed, the fan will be stopped for ten times.

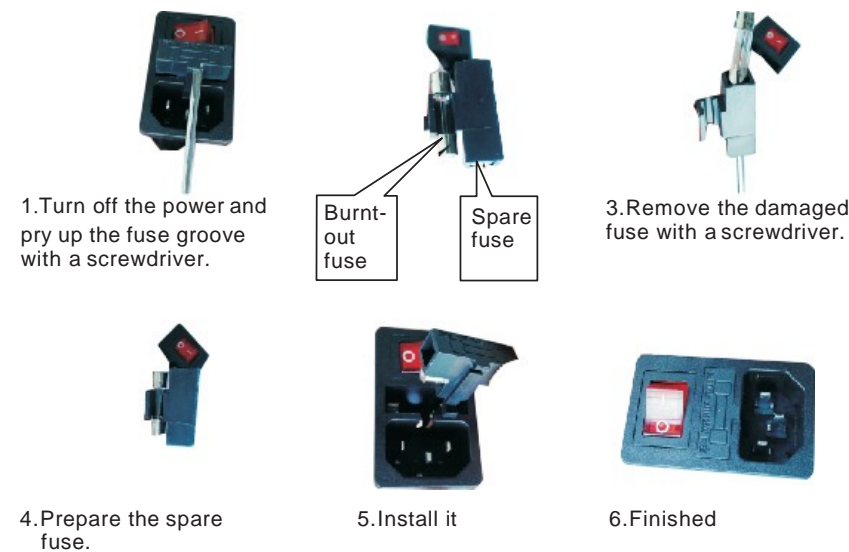
## 8. Troubleshooting

- ◆ Make sure the power is switched off before inspecting or repairing!
- Problem 1:** The machine still works, but the air flow is very weak and suction power is greatly reduced.  
**Cause:** Air Inlet is blocked or foreign body exists inside the duct. The filter becomes saturated and hence gets blocked and gives an alarm.  
**Solution:** Turn off the power and open the top cover. Check if there is any foreign body blocked in the air inlet. Then check if the air vent is blocked or not. If the suction power of the empty-loaded machine is normal, it means the filter needs to be replaced.

**Problem 2:** The machine shuts down automatically after it is just started. Even if you restart the machine, the same problem happens again.  
**Cause:** The air flow inside the machine is not smooth. The obstruction of the filter is very strong. As a result, the starting current of the fan becomes very high, hence the machine shuts down automatically for self protection.  
**Solution:** Turn off the power and open the top cover. Check if there is any foreign body blocked in the air inlet. Then turn the speed-adjusting knob to the lowest level and restart the machine. The machine will be back to normal.

3. Turn the power switch on if the, power indicator does not light up, the fuse might be bad and needs to be replaced, the replacement fuse steps:

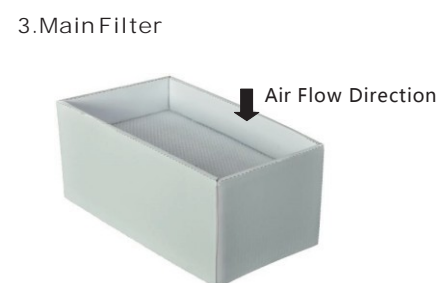
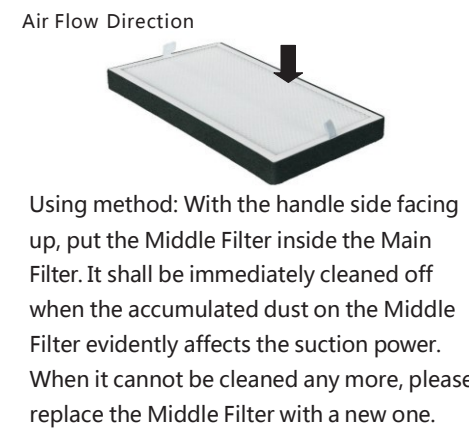
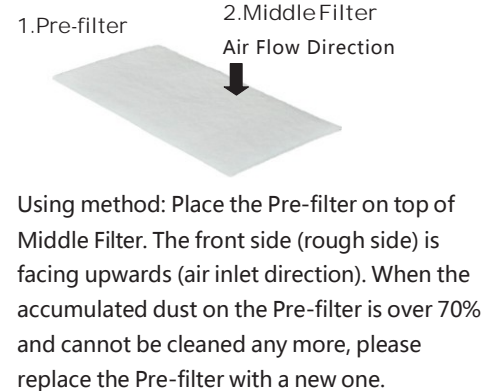
### Operation steps to replace the fuse:



If the trouble remains after these inspections and maintenance, please contact the manufacturer or dealer.

## 9. How to use and maintain the filters

This product uses replaceable filtering consumables. When the consumables have been used to a certain extent, they need to be cleaned or replaced, in order to guarantee the good purifying effect of the machine.



## 10. Attentions

1. The power input of this product shall be used within the specified nominal voltage scope (subject to power identification on the product body). It's strictly forbidden for the use with excessive high or low voltage, if the ambient voltage is unstable, please turn off the machine · unplug the power plug and use it again upon power stabilizing.
2. While using the machine, the ambient temperature range of the gas and the dust sucked into the air inlet: atmospheric temperature - 60 °C, never use it when the temperature is higher or lower than this temperature scope.
3. When using the machine, the humidity of the gas and the dust sucked into the air inlet should be between 40%-80%. If the humidity is excessively high, the filter element will become invalid rapidly and the internal circuit will be damaged, never use it when the humidity is higher than 80%.
4. When the machine has a primary cotton filter, properly install the primary cotton filter before use, primary cotton filter can be classified as disposable consumable and never use it again after washing, please replace the primary cotton filter configured by the original manufacturer, regularly, never use the machine without primary cotton filter or with poor primary cotton filter, (poor or washed primary cotton filter over the market performs poorly and medium and high-efficiency filter element in the subsequent stages will be blocked up or become invalid quickly and cause greater losses.)
5. It's strictly forbidden to use this machine without a filter element, because the cooking fume or the dust particle sucked in the machine directly would cause damage to the air blower and control system. Any fault caused by machine use under the aforesaid status shall be serviced at the user's own cost, there for greater losses can be caused.
6. It's not permitted to continue to use the machine when the filter element or the filter cotton is blocked up. This will greatly shorten the service life of the machine, even damage the machine, please clean and maintain the machine regularly and replace the filter element regularly to ensure the machine's working in good condition.

7. In case your machine filter element is blocked up, the suction force is lowered or the filter element for foreign odor removal fails for foreign odor removal, it's not permitted to use this machine by reducing the machine's number of layers of the filter elements or without putting in primary filter element or cotton. Please replace it with the filter element and primary filter cotton configured by the original manufacturer.

8. Never open the machine for maintenance by yourself, the warranty sticker on the machine is the only voucher for you to enjoy after-sales service · so please don't tear it up or damage it.

We will not undertake any of the losses above. Such losses are not included in the warranty.